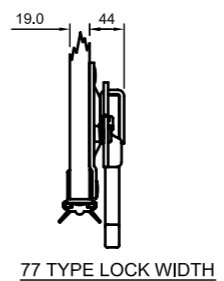
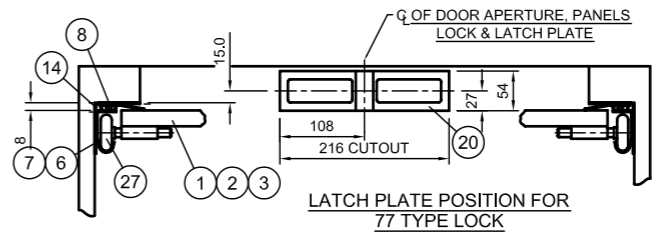
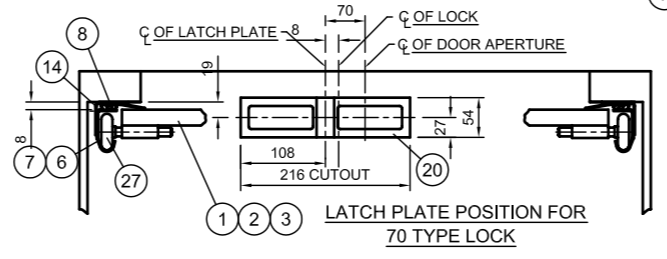


REF	DESCRIPTION	PART No	MATERIAL	DWG
1	TOP, INTERMEDIATE & BOTTOM PANELS VARY			
2	ACCORDING TO DOOR NUMBER			
3	AVAILABLE PLAIN OR COMPLETE WITH HARDWARE			
4	HORIZONTAL TRACK 254mm(10") RADIUS-O/S	30111-04A0000	MILD STEEL	
5	HORIZONTAL TRACK 254mm(10") RADIUS-N/S	30111-05A0000	MILD STEEL	W 220
6	VERTICAL TRACK-OFFSIDE	3011031-02000	MILD STEEL	
7	VERTICAL TRACK-NEARSIDE	3011031-02000	MILD STEEL	
8	SIDE SEAL	30116-ECODF09		W 275
9				
10	M8 'U' BOLT-CABLE ANCHOR	30170-1300010		
11	NAME PLATE	301NP0000010		
12	BOTTOM 'U' CHANNEL	3011801-00000	ALUMINIUM	W 212
13	BOTTOM SEAL	3011676-000UK		W 172
14	MOUNTING ANGLE 57mm x 63mm	30161-0000000		
15	PULL DOWN STRAP LENGTH (19")	30123-0000015		
16	RIVET-SEMI-TUBULAR(1/4" x 1-3/16")	30110-1002-04		
17	GRAB HANDLE	3011715-00000	'E'-COATED	
18	70 TYPE LOCK ASSEMBLY	30170-300-000	'E'-COATED	
19	CABLE-3175mm(125")	3011-1A00000		
20	LATCH PLATE	3012804-00000		W 83
21	RIVET-SEMI-TUBULAR(1/4" x 1")	30110-1002-03		
22	RIVET-SEMI-TUBULAR(1/4" x 1-1/8")	30110-1002-11		
23	BOTTOM ROLLER BRACKET	3011370-00000		
24	BOTTOM ROLLER SHAFT COVER	3011021-1-000		
25	M6 SELF LOCKING NUT	30110-1022-03		
26	TRACK ROLLER(STEEL)	3012996-00000		SW 27
27	TRACK ROLLER(NYLON)	3013228-00000		SW 77
28	RIVET-SEMI-TUBULAR(1/4" x 1-13/32")	30110-1002-10		
29				
30				
31	ROLLER CLAMP	3011208-1-000	MILD STEEL/'E' COATED	
32	SPACER WASHER-ROLLER SHAFT	30106-0000000		
33	TOP SEAL	30126-W010000		W 01
34	TOP CLOSURE SLIDE	3011726-00000	MILD STEEL/'E' COATED	
35	TOP CLOSURE BASE	3011264-00000	MILD STEEL/'E' COATED	
36				
37	M8 CUP SQUARE HEAD BOLT	30110-1005-10		
38	TRACK STOP BUMPER	30183-0000000		
39	BOLT M6 x 63.5	30110-1010-05		
40	M8 WHIZ NUT	30110-1063-03		
41	BALANCER ASSEMBLY			
42	PENNY WASHER	30193-0000020		
43	5 x 38 SPLIT PIN	30110-1009-08		W 262
44	M6 LOCKNUTS	301930000SSM6		
45	'B' PLAN CORNER PLATE NEARSIDE	3011036-00000	MILD STEEL	W 32
46	'B' PLAN CORNER PLATE OFFSIDE	3011037-00000	MILD STEEL	
47	77 TYPE LOCK ASSEMBLY	30177-0000000	MILD STEEL/'E' COATED	
48	LOCK HANDLE KEEPER	3012766-00001	MILD STEEL/'E' COATED	
49	BALANCER MOUNTING BRACKET O/S	3012523-00000	MILD STEEL	
50	BALANCER MOUNTING BRACKET N/S	3012524-00000	MILD STEEL	
51	BALANCER MOUNTING BRACKET CENTRE	3012525-00000	MILD STEEL	
52	BALANCER MOUNTING BRACKET TORQUE	3012526-00000	MILD STEEL	
53	FOLDED ANTI LOZENGE BRACKET (R/H)	301920001W290	STAINLESS STEEL	W 290
54	FOLDED ANTI LOZENGE BRACKET (L/H)	301920002W290	STAINLESS STEEL	
55	HORIZONTAL TRACK 203mm(8") RADIUS-O/S	30111-02A0000	MILD STEEL	W 220
56	HORIZONTAL TRACK 203mm(8") RADIUS-N/S	30111-03A0000	MILD STEEL	



RIGHT HAND

LEFT HAND



NOTES!  
1 LEFT & RIGHT HAND ARE DETERMINED BY STANDING OUTSIDE LOOKING AT THE SHUTTER.

16	KH	14.6.04	METRIC THREADS ADDED TO PARTS LIST
15	KH	29.8.01	SURELOCK SECTIONAL VIEW ADDED
14	KH	24.8.00	DRAWING AMENDED FOR DXF FORMAT
13	AS	1.8.00	ITEMS 6, 7, 15, 18, 53 & 54 AMENDED
12	AS	6.6.00	REDC 627 ITEMS 44, 53 & 54 PRODUCT CODES AMENDED
11	AS	11.3.99	BALLOON REF. 53 WAS 54 & VICE VERSA
10	AS	22.10.98	REDC 535 'B' PLAN PLATES AMENDED & NUTS FOR U-BOLTS ADDED.
9	KH	16.10.98	ITEM 34 BALLOON MOVED TO CORRECT COMPONENT
8	KH	10.10.98	ITEM 53 ADDED TO DRAWING TO AVOID CONFUSION
7	KH/JAE	15.9.97	PART No. CHANGE
6	AS	30.1.97	PART & ITEM No. CHANGE
5	KH	31.7.95	PART No CHANGE
4	PM	10.03.95	IND.C. 343 PART No CHANGE
3	KH	23.11.93	IND.C. 213 NEW ANTI-LOZENGE DESIGN & PART No.s AMENDED
2	KH	4.6.93	ANTI-LOZENGE UPDATED
1	KH	8.3.93	FIRST ISSUE

ISSUE DRAWN CHD DATE MOD. No. MODIFICATION

ALL DIMENSIONS IN MILLIMETERS UNLESS OTHERWISE SPECIFIED

3RD ANGLE PROJECTION UNLESS OTHERWISE SPECIFIED

ANGULAR DIMS ± DECIMAL DIMS ±

TREATMENT COMPUTER PART No.

TITLE: EXCEL 2000 EXPLODED VIEW WITH 70 & 77 TYPE LOCKS

DRAWING No: W 264

SHEET OF

J Industries

J.R. INDUSTRIES LTD  
CAYTON PLACE, PENYFFYN,  
CARDIFF, S. GLAM. CF2 7JN  
TEL: (0222) 549966 FAX: (0222) 549046  
THIS DRAWING AND COPYRIGHT THEREOF ARE THE PROPERTY OF J.R. INDUSTRIES LTD.  
AND MUST NOT BE REPRODUCED IN PART OR WHOLE OR PASSED ON TO OTHERS WITHOUT PERMISSION.

DRAWING SIZE A3 420mm x 297mm